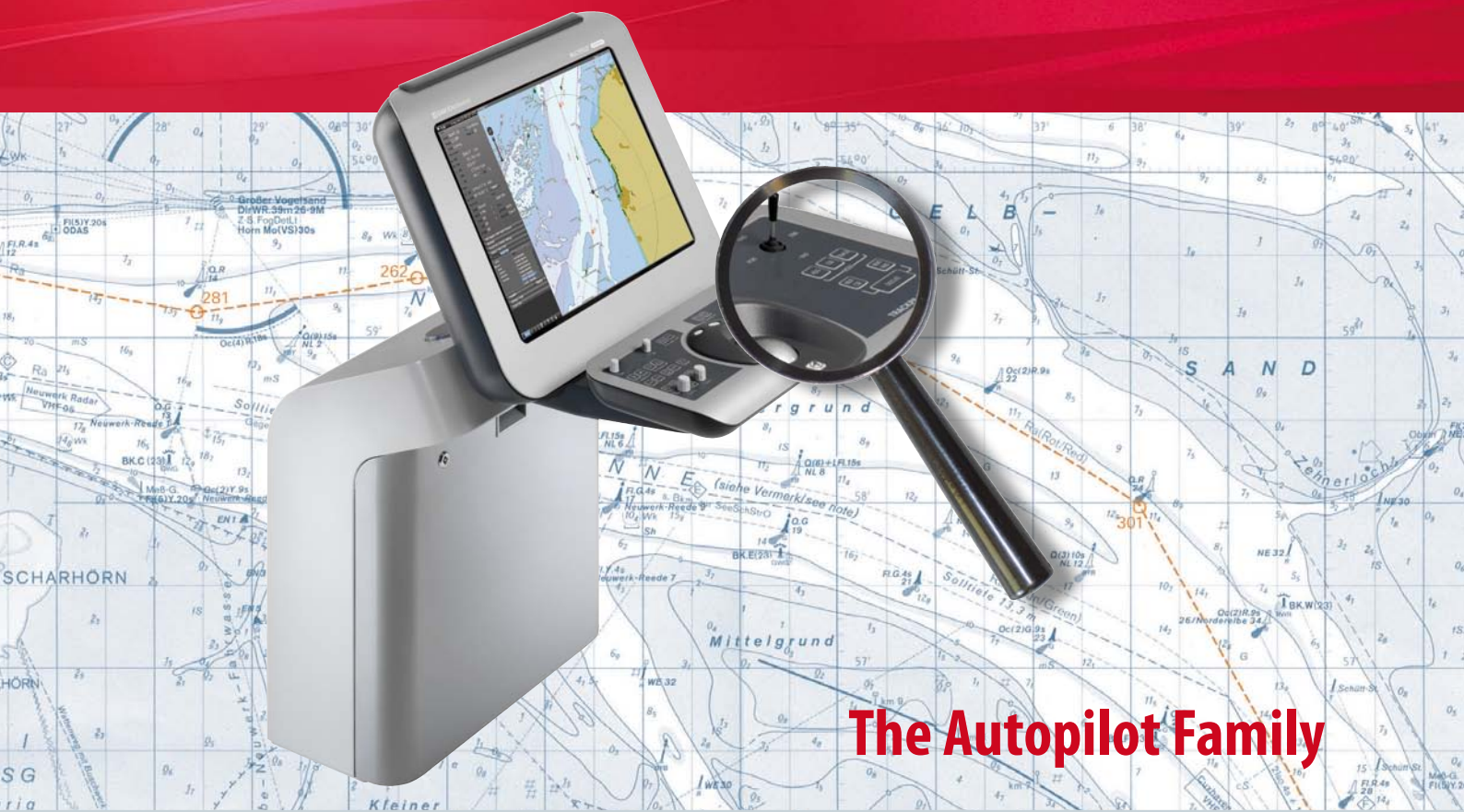


# TRACKPILOT platinum

## NACOS Platinum Series



**The Autopilot Family**

Wärtsilä SAM Electronics

# TRACKPILOT platinum

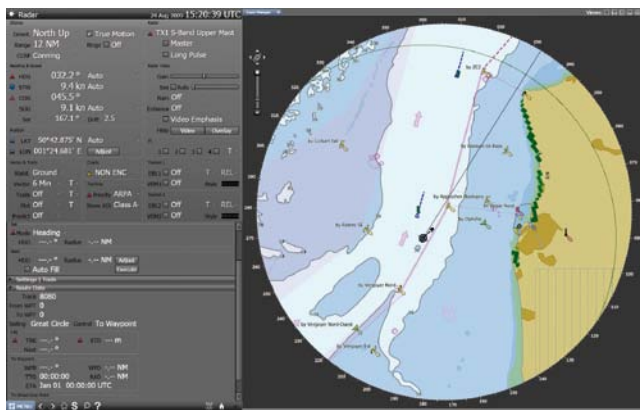
## NACOS Platinum Series

### The Captain's First Choice

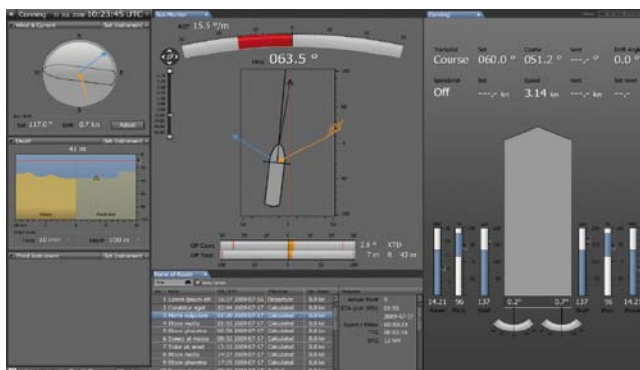
Technological advances in ship control have raised the standards in economic, efficient and reliable vessel management. Therefore, the demand is greater than ever for highly accurate automated steering, to optimise vessel performance whilst reducing the crew workload.

Wärtsilä SAM successfully combines decades of experience in heading and track control with the benefits of modern platform technologies and innovative user centred design. The result provides the navigator with a reliable Co-Pilot for the most demanding of navigational situation.

*TRACKPILOT control as a part of RADARPILOT*



*Conning display*



### Functional Package "Heading Control"

- Heading Mode according to Heading Control Standard
- Intuitive and easy to operate remotely from RADARPILOT / ECDISPILOT / MULTIPILOT (joystick control)
- Radius Control with display of Curved Heading Line
- Visualisation at Conning Display and Radar/ECDIS
- Use of adaptive algorithms based on internal ship's model
- Manual adaptation to the current loading state
- Suitable for a wide range of ship types from 50m upwards
- Operates with various rudder / propulsion types
- Adjustable from precise to tolerant control (economy)
- Consistent alarm management within all subsystems of Platinum series
- Online operators manual and user help function

### Functional Package "Track Control"

- All "Heading Control" features
- Course Mode (compensation of drift)
- Track Mode according to IMO/IEC Track Control Standard Category C
- Remote maintenance function
- Optional speed control
- Optional anchor control



## User Centred Design

The Human Machine Interface (HMI) of the NACOS Platinum series is a story in itself. Understanding the need for easy and safe operation across systems and applications, Wärtsilä SAM Electronics has pooled its 30 years of experience with that of leading international human factors expertise. Working together throughout an ambitious User Centred Design process, the result is an HMI that is intuitive, transparent and consistent. The HMI supports both novices and expert users, and is designed to match the user's information needs. By following operating principles similar to those of modern browsers and major software packages, the NACOS Platinum HMI will be immediately familiar to any computer user, and the easy overview and simplicity of operation directly allows the user to concentrate on the task of navigating the ship safely.

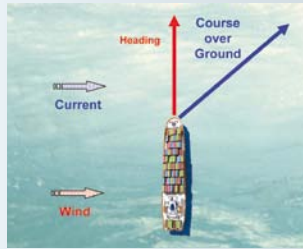
## Reliable System Architecture

The **TRACKPILOT Platinum** is an Ethernet-LAN based solution that offers easy integration to the entire Platinum platform. Redundancy is available in all aspects.

Care has been taken in a complete encapsulation between time-critical and safety relevant control algorithms on one side and display and remote control on the other side.

## Common Software Platform

The Platinum series offers options far beyond other systems. Its common software platform allows the installation of any application to any Platinum workstation regardless of location. Thus, all required TRACKPILOT tasks run wherever a customer demands.



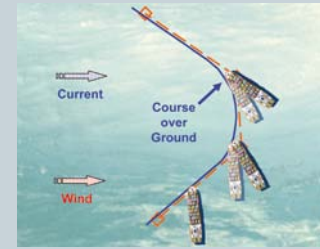
### Heading Mode

In Heading Mode the TRACKPILOT is steering with a pre-set heading. Influence by wind and current is not corrected.



### Course Mode

In Course Mode the TRACKPILOT is steering with a pre-set course. Wind and current are considered and a drift correction angle will be calculated.



### Track Mode

In Track Mode the TRACKPILOT is steering along a sequence of waypoints. Wind and current are considered and a drift correction angle will be calculated.



### Anchor Control Mode

Monitoring of the anchorage and automatic control of stern thrusters to keep the vessel on its heading and position.



### Speed Control - Arrival Mode

An arrival time is set for the destination and the system will calculate automatically the required set speed in order to reach the destination at the defined arrival time.



RADARPILOT trackball



TRACKPILOT operating panel

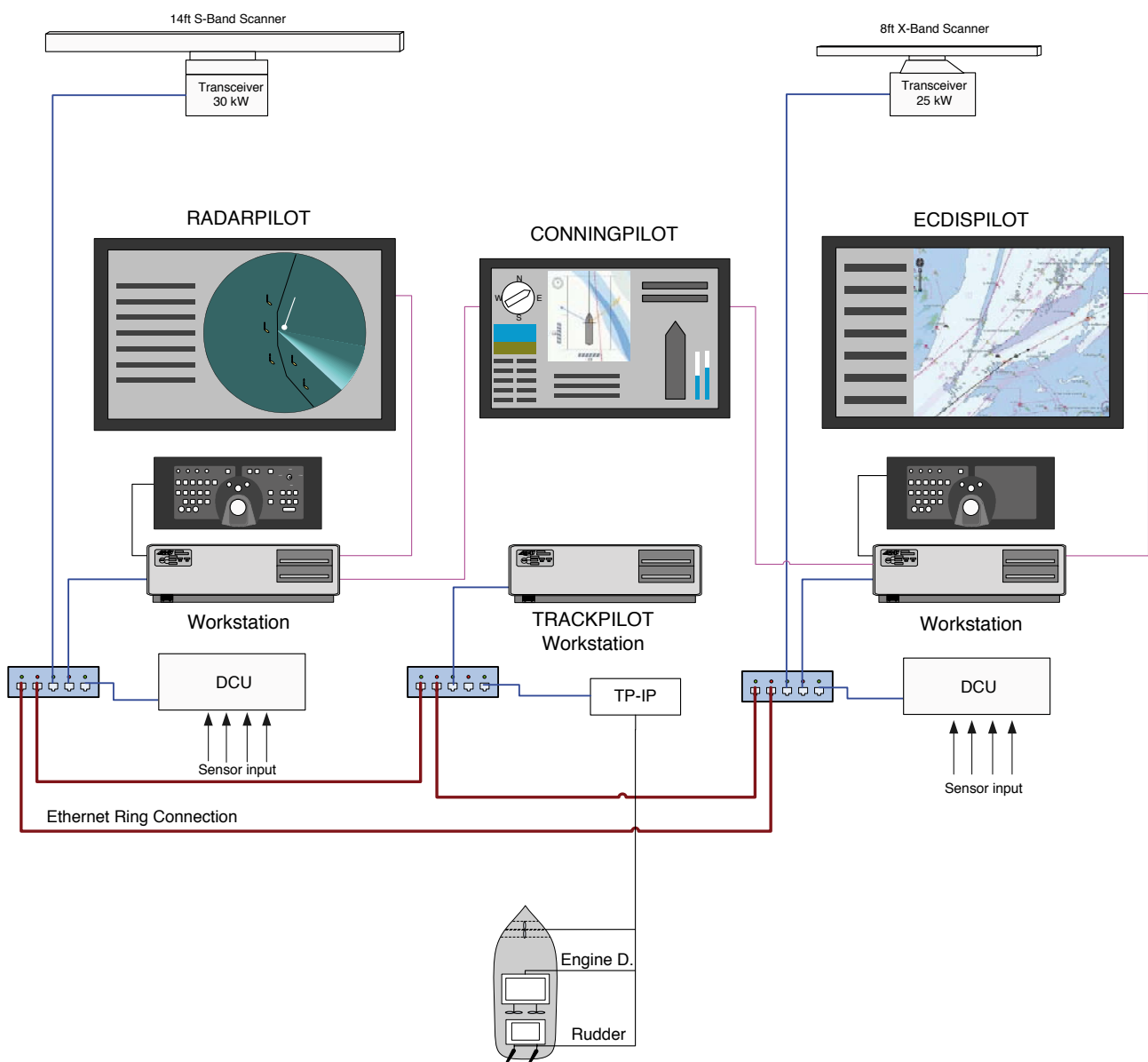
## Benefits of NACOS Platinum Series

- Easy to install and to maintain
- Extremely user friendly = less training
- Cost efficient solution focused on increasing user value
- Common hardware platform = reduced spare parts



# TRACKPILOT platinum

## System Configuration



Installation RADARPILOT, ECDISPILOT and TRACKPILOT with conning

### Detailed technical information is available from:

Wärtsilä SAM Electronics GmbH  
Automation, Navigation, Communication  
Behringstrasse 120  
22763 Hamburg · Germany

Phone: +49 (0)40 - 88 25 - 28 41  
Fax +49 (0)40 - 88 25 - 41 16  
ANC@sam-electronics.de  
www.sam-electronics.de